



suzusan

2021 Spring / Summer Collection
"Roots and Leaves"































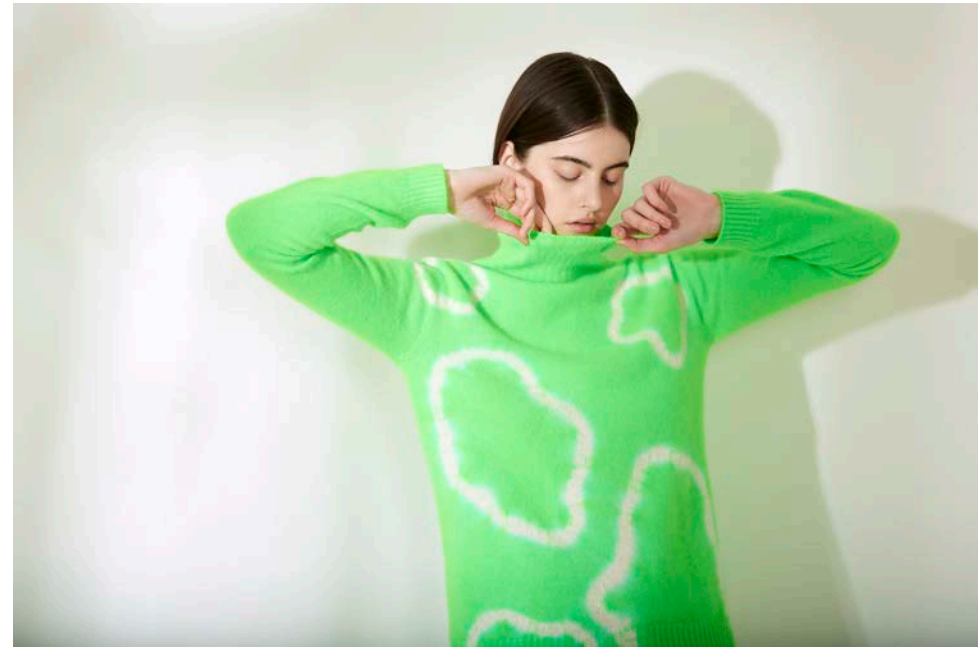






















































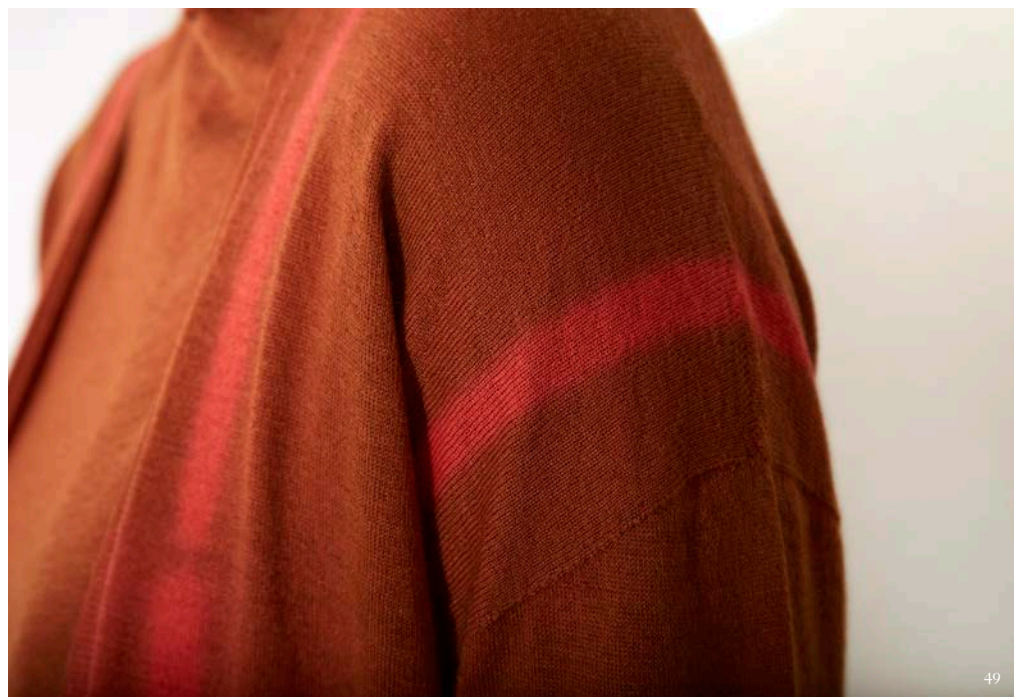






















1 Cotton-Linen-Ramie 3/4 Sleeve Semi Long Blouse | Orinui Shibori "Roots" | 55% Cotton / 23% Linen / 22% Ramie | Green / Dark Navy | 4036CL-212-5029



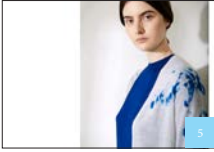
Left
Hand Woven Feather Weight Cashmere Shawl – L | Makiage Shibori "Square" | 100% Cashmere | Periwinkle / White | 0002K-432-7500
Spring Cashmere Seamless Cardigan | Tesuji Shibori "Fragment" | 100% Cashmere | Periwinkle / Natural White | 3064K-021-7501
Spring Cashmere Seamless Pullover – Short | Boujime Shibori "Line" | 100% Cashmere | Periwinkle / Natural White | 3062K-551-7501
Right
Spring Cashmere Seamless Pullover – Short | Boujime Shibori "Line" | 100% Cashmere | Periwinkle / Natural White | 3062K-551-7501



3 Spring Cashmere Seamless Pullover – Long | Madara Shibori "Fragment" | 100% Cashmere | Periwinkle / Natural White | 3028K-011- 7501



4 Spring Cashmere Seamless Pullover – Short | Tesuji Shibori "Fragment" | 100% Cashmere | Royal Blue / Natural White | 3062K-021- 2101



5 Spring Cashmere Cardigan | Madara Shibori "Fragment" | 100% Cashmere | Royal Blue / Natural White | 3064K-011-2101
Spring Cashmere Seamless Pullover – Short | Tesuji Shibori "Fragment" | 100% Cashmere | Royal Blue / Natural White | 3062K-021- 2101



6 Spring Cashmere Seamless Pullover – Long | Boujime Shibori "Line" | 100% Cashmere | Royal Blue / Natural White | 3063K-551-2101



Left
Hand Woven Linen Shawl | Madara Shibori | 100% Linen | Blue / Blue | 0037L-010-2020
Cotton Dual-Layered 3/4 Sleeve Jersey Dress | Madara Shibori "Fragment" | 100% Cotton | Navy Blue / White | 7021C-011-2300
Right
Cotton Dual-Layered 3/4 Sleeve Jersey Dress | Madara Shibori "Fragment" | 100% Cotton | Navy Blue / White | 7021C-011-2300



8 Cotton Dual-Layered 3/4 Sleeve T-Shirt | Nemaki Shibori "Ameba" | 100% Cotton | Navy Blue / White | 2042C-082-2300



Left
Cotton-Linen-Ramie Front Button Dress | Makiage Shibori "Leaves" | 55% Cotton / 23% Linen / 22% Ramie | Blue / Dark Navy | 7022CL-435-2029
Right
Hand Woven Linen Shawl | Makiage Shibori "Leaves" | 100% Linen | Blue / Blue | 0037L-435-2020
Cotton-Linen-Ramie Front Button Dress | Makiage Shibori "Leaves" | 55% Cotton / 23% Linen / 22% Ramie | Blue / Dark Navy | 7022CL-435-2029



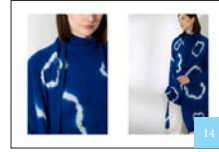
11 Hand Woven Linen Shawl | Makiage Shibori "Leaves" | 100% Linen | Blue / Blue | 0037L-435-2020
Cotton-Linen-Ramie Front Button Dress | Makiage Shibori "Leaves" | 55% Cotton / 23% Linen / 22% Ramie | Blue / Dark Navy | 7022CL-435-2029



12 Hand Woven Feather Weight Cashmere Shawl – L | Nemaki Shibori "Ameba" | 100% Cashmere | Royal Blue / White | 0002K-082-2100



Left
Hand Woven Feather Weight Cashmere Shawl – M | Makiage Shibori "Leaves" | 100% Cashmere | Royal Blue / White | 0001K-435-2100
Cashmere Seamless Pullover – Long | Makiage Shibori "Leaves" | 100% Cashmere | Royal Blue / Light Grey | 3028K-435-2114
Right
Cashmere Seamless Pullover – Long | Makiage Shibori "Leaves" | 100% Cashmere | Royal Blue / Light Grey | 3028K-435-2114



14 Cashmere Semi Long Coat | Nemaki Shibori "Ameba" | 100% Cashmere | Royal Blue / Light Grey | 3058K-082-2114
Cashmere Seamless Thigh-High Pullover | Nemaki Shibori "Ameba" | 100% Cashmere | Royal Blue / Light Grey | 3060K-082-2114



15 Hand Woven Baby Wool Shawl | Madara Shibori "Fragment" | 100% Baby Wool | Royal Blue / Light Grey | 0013W-011-2114
Cashmere Seamless Turtle Neck Pullover | Madara Shibori "Fragment" | 100% Cashmere | Royal Blue / Light Grey | 3065K-011-2114



17 Cotton Dual-Layered 3/4 Sleeve T-Shirt | Madara Shibori "Fragment" | 100% Cotton | Grey / White | 2042C-011-1200



18 (W) Cotton Dual-Layered 3/4 Sleeve T-Shirt | Madara Shibori "Fragment" | 100% Cotton | Grey / White | 2042C-011-1200
(M) Cotton Dual-Layered Long Sleeve T-Shirt | Madara Shibori "Fragment" | 100% Cotton | Grey / White | 2041C-011-1200



19 Cotton Dual-Layered Long Sleeve T-Shirt | Tesuji Shibori "Fragment" | 100% Cotton | Grey / White | 2041C-021-1200



Left
Cotton-Linen-Ramie 3/4 Sleeve Semi Long Blouse | Makiage Shibori "Leaves" | 55% Cotton / 23% Linen / 22% Ramie | Grey / Sand | 4036CL-435-1203
Right
Hand Woven Linen Shawl | Tesuji Shibori "Fragment" | 100% Linen | Grey / Sand | 0037L-021-1203
Cotton-Linen-Ramie 3/4 Sleeve Semi Long Blouse | Makiage Shibori "Leaves" | 55% Cotton / 23% Linen / 22% Ramie | Grey / Sand | 4036CLR-435-1203



Left
Cotton-Linen-Ramie Front Button Dress | Orinui Shibori "Roots" | 55% Cotton / 23% Linen / 22% Ramie | Grey / Sand | 7022CL-212-1203

Right
Hand Woven Linen Shawl | Madara Shibori | 100% Linen | Dark Navy / Blue | 0037L-010-2920
Cotton-Linen-Ramie Front Button Dress | Orinui Shibori "Roots" | 55% Cotton / 23% Linen / 22% Ramie | Grey / Sand | 7022CL-212-1203



Left
(M) Cashmere Seamless Pullover - Long | Yatara Miura Shibori "Fragment" | 100% Cashmere | Kelly Green / Natural White | 3028K-032-5701
(W) Cashmere Seamless Semi Long Coat | Madara Shibori "Fragment" | 100% Cashmere | Kelly Green / Natural White | 3058K-011-5701
(W) Cashmere Seamless Pullover - Long | Madara Shibori "Fragment" | 100% Cashmere | Kelly Green / Natural White | 3028K-011-5701

Right
Cashmere Seamless Turtle Neck Pullover | Nemaki Shibori "Ameba" | 100% Cashmere | Kelly Green / Natural White | 3065K-082-5701



Hand Woven Feather Weight Cashmere Shawl - M | Nemaki Shibori "Ameba" | 100% Cashmere | Kelly Green / White | 0001K-082-5700
Cashmere Seamless Turtle Neck Pullover | Nemaki Shibori "Ameba" | 100% Cashmere | Kelly Green / Natural White | 3065K-082-5701



Cotton-Linen-Ramie Front Button Dress | Orinui Shibori "Roots" | 55% Cotton / 23% Linen / 22% Ramie | Dark Navy / Sand | 7022CL-212-2903



(M) Cashmere Seamless Pullover - Long | Makiage Shibori "Leaves" | 100% Cashmere | Black / Sand | 3057K-435-1003
(W) Cotton-Linen-Ramie Front Button Dress | Orinui Shibori "Roots" | 55% Cotton / 23% Linen / 22% Ramie | Dark Navy / Sand | 7022CL-212-2903



Left
Cashmere Semi Long Coat | Yatara Miura Shibori "Fragment" | 100% Cashmere | Silver Grey / Natural White | 3058K-032-1301
Cashmere Seamless Thigh-High Pullover | Yatara Miura Shibori "Fragment" | 100% Cashmere | Silver Grey / Natural White | 3060K-032-1301

Right
Cashmere Seamless Short Cape | Yatara Miura Shibori "Fragment" | 100% Cashmere | Black / Sand | 3059K-032-1003
Cashmere Seamless Pullover - Short | Yatara Miura Shibori "Fragment" | 100% Cashmere | Black / Sand | 3027K-032-1003



Cotton Dual-Layered 3/4 Sleeve T-Shirt | Tesuji Shibori "Fragment" | 100% Cotton | Black / White | 2042C-021-1000



Cotton Dual-Layered 3/4 Sleeve Jersey Dress | Nemaki Shibori "Ameba" | 100% Cotton | Black / White | 7021C-082-1000



Cotton Dual-Layered 3/4 Sleeve Jersey Dress | Madara Shibori "Fragment" | 100% Cotton | Black / White | 7021C-011-1000



Left
Spring Cashmere Seamless Cardigan | Boujime Shibori "Line" | 100% Cashmere | Black / Natural White | 3064K-551-1001
Spring Cashmere Seamless Pullover - Short | Boujime Shibori "Line" | 100% Cashmere | Black / Natural White | 3062K-551-1001

Right
(W) Spring Cashmere Seamless Cardigan | Boujime Shibori "Line" | 100% Cashmere | Black / Natural White | 3064K-551-1001
(W) Spring Cashmere Seamless Pullover - Short | Boujime Shibori "Line" | 100% Cashmere | Black / Natural White | 3062K-551-1001
(M) Spring Cashmere Seamless Pullover - Long | Tesuji Shibori "Fragment" | 100% Cashmere | Black / Natural White | 3063K-021-1001



Left
Hand Woven Feather Weight Cashmere Shawl - M | Makiage Shibori "Leaves" | 100% Cashmere | Black / White | 0001K-435-1000
Cashmere Seamless Pullover - Long | Makiage Shibori "Leaves" | 100% Cashmere | Black / Sand | 3028K-435-1003

Right
Cashmere Semi Long Coat | Makiage Shibori "Leaves" | 100% Cashmere | Black / Sand | 3058K-435-1003
Cashmere Seamless Pullover - Long | Makiage Shibori "Leaves" | 100% Cashmere | Black / Sand | 3028K-435-1003



Left
Cashmere Seamless Pullover - Long | Nemaki Shibori "Ameba" | 100% Cashmere | Black / Sand | 3028K-082-1003

Right
Cashmere Semi Long Coat | Nemaki Shibori "Ameba" | 100% Cashmere | Black / Sand | 3058K-082-1003
Cashmere Seamless Pullover - Long | Nemaki Shibori "Ameba" | 100% Cashmere | Black / Sand | 3028K-082-1003



Cashmere Seamless Turtle Neck Wide Pullover | Madara Shibori "Fragment" | 100% Cashmere | Black / Sand | 3061K-011-1003



Hand Woven Linen Shawl | Madara Shibori | 100% Linen | Blue / Blue | 0037L-010-2020
Cotton-Linen-Ramie 3/4 Sleeve Semi Long Blouse | Orinui Shibori "Roots" | 55% Cotton / 23% Linen / 22% Ramie | Green / Dark Navy | 4036CL-212-5029



Left
Cashmere Semi Long Coat | Madara Shibori "Fragment" | 100% Cashmere | Spruce / Light Grey | 3058K-011-5414
Cashmere Seamless Pullover - Short | Madara Shibori "Fragment" | 100% Cashmere | Spruce / Light Grey | 3027K-011-5414

Right
Cashmere Seamless Pullover - Short | Madara Shibori "Fragment" | 100% Cashmere | Spruce / Light Grey | 3027K-011-5414



Cashmere Seamless Turtle Neck Wide Pullover | Nemaki Shibori "Ameba" | 100% Cashmere | Spruce / Light Grey | 3061K-082-5414



Cashmere Seamless Pullover - Short | Makiage Shibori "Leaves" | 100% Cashmere | Spruce / Light Grey | 3027K-435-5414



Cashmere Seamless Pullover - Long | Nemaki Shibori "Ameba" | 100% Cashmere | Silver Grey / Natural White | 3028K-082-1301



Left

Hand Woven Feather Weight Cashmere Shawl – M | Makiage Shibori "Square" | 100% Cashmere | Silver Grey / White | 0001K-432-1300
Cashmere Seamless Turtle Neck Pullover | Madara Shibori "Fragment" | 100% Cashmere | Silver Grey / Natural White | 3065K-011-1301

Right below

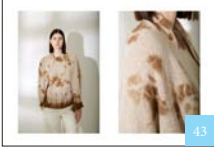
Cashmere Seamless Short Cape | Madara Shibori "Fragment" | 100% Cashmere | Silver Grey / Natural White | 3059K-011-1301
Cashmere Seamless Turtle Neck Pullover | Madara Shibori "Fragment" | 100% Cashmere | Silver Grey / Natural White | 3065K-011-1301

41



42

Cashmere Seamless Turtle Neck Pullover | Madara Shibori "Fragment" | 100% Cashmere | Ecu / Sand | 3065K-011-0203



43

Cashmere Seamless Short Cape | Madara Shibori "Fragment" | 100% Cashmere | Ecu / Sand | 3059K-011-0203
Cashmere Seamless Pullover – Long | Madara Shibori "Fragment" | 100% Cashmere | Ecu / Sand | 3028K-011-0203



44

Cashmere Semi Long Coat | Yatara Miura Shibori "Fragment" | 100% Cashmere | Ecu / Sand | 3058K-032-0203
Cashmere Seamless Turtle Neck Wide Pullover | Yatara Miura Shibori "Fragment" | 100% Cashmere | Ecu / Sand | 3061K-032-0203



46

Cashmere Seamless Pullover – Short | Nemaki Shibori "Ameba" | 100% Cashmere | Ecu / Sand | 3027K-082-0203



47

Left

Cashmere Seamless Pullover – Short | Makiage Shibori "Leaves" | 100% Cashmere | Ecu / Sand | 3027K-435-0203

Middle

Cashmere Seamless Short Cape | Makiage Shibori "Leaves" | 100% Cashmere | Ecu / Sand | 3059K-435-0203
Cashmere Seamless Pullover – Short | Makiage Shibori "Leaves" | 100% Cashmere | Ecu / Sand | 3027K-435-0203

Right

Cashmere Seamless Turtle Neck Pullover | Makiage Shibori "Leaves" | 100% Cashmere | Ecu / Sand | 3065K-435-0203



48

Left

Cotton Dual-Layered 3/4 Sleeve Jersey Dress | Tesuji Shibori "Fragment" | 100% Cotton | Deep Orange / White | 7021C-021-4600

Right

Hand Woven Linen Shawl | Madara Shibori | 100% Linen | Burnt Orange / Sand | 0037L-010-4403
Cotton Dual-Layered 3/4 Sleeve Jersey Dress | Tesuji Shibori "Fragment" | 100% Cotton | Deep Orange / White | 7021C-021-4600



49

Spring Cashmere Seamless Cardigan | Boujime Shibori "Line" | 100% Cashmere | Brown / Burnt Orange | 3064K-551-6044
Spring Cashmere Seamless Pullover – Long | Tesuji Shibori "Fragment" | 100% Cashmere | Brown / Burnt Orange | 3063K-021-6044



50

Left

Cashmere Seamless Pullover – Long | Nemaki Shibori "Ameba" | 100% Cashmere | Salmon / Light Grey | 3028K-082-3814

Right

Cashmere Seamless Short Cape | Nemaki Shibori "Ameba" | 100% Cashmere | Salmon / Light Grey | 3059K-082-3814
Cashmere Seamless Pullover – Long | Nemaki Shibori "Ameba" | 100% Cashmere | Salmon / Light Grey | 3028K-082-3814



51

Cashmere Seamless Thigh-High Pullover | Yatara Miura Shibori "Fragment" | 100% Cashmere | Salmon / Light Grey | 3060K-032-3814



52

Cashmere Semi Long Coat | Madara Shibori "Fragment" | 100% Cashmere | Salmon / Light Grey | 3058K-011-3814
Cashmere Seamless Pullover – Long | Madara Shibori "Fragment" | 100% Cashmere | Salmon / Light Grey | 3028K-011-3814



53

Spring Cashmere Seamless Cardigan | Madara Shibori "Fragment" | 100% Cashmere | Crimson / Burnt Orange | 3064K-011-3144
Spring Cashmere Seamless Pullover – Short | Tesuji Shibori "Fragment" | 100% Cashmere | Crimson / Burnt Orange | 3062K-021-3144

Model | Anastasia Javanovic (Modelwerk), Hiroyuki Murase
Photo | Rebecca Hölzgen
Photo Assistant | Aline Becker, Jan Anskait
Hair & Make Up | Kazunori Yoda, Kae Kosugi, Yoko Okuwaki
Art Direction | Hiroyuki Murase
Art Direction Assistant | Silvia Roosen

suzusan

Suzusan GmbH & Co. KG

Ronsdorfer Straße 77a | 40233 Düsseldorf | Germany

T | +49 (0)211 3021053 - 0

Suzusan Co., Ltd.

3730 Arimatsu | Midori-ku | Nagoya 458-0924 | Japan

T | +81 (0)52 693 9624

info@suzusan.com | www.suzusan.com